

▽ SURFACE OR STAND MOUNTED PORTION CUP & LID DISPENSERS

STAINLESS STEEL CONSTRUCTION

SFL SERIES SURFACE OR STAND MOUNT PORTION CUP & LID DISPENSERS

Stainless steel units are designed to dispense a variety of 2 oz. to 6 oz. cups, containers and matching lids.

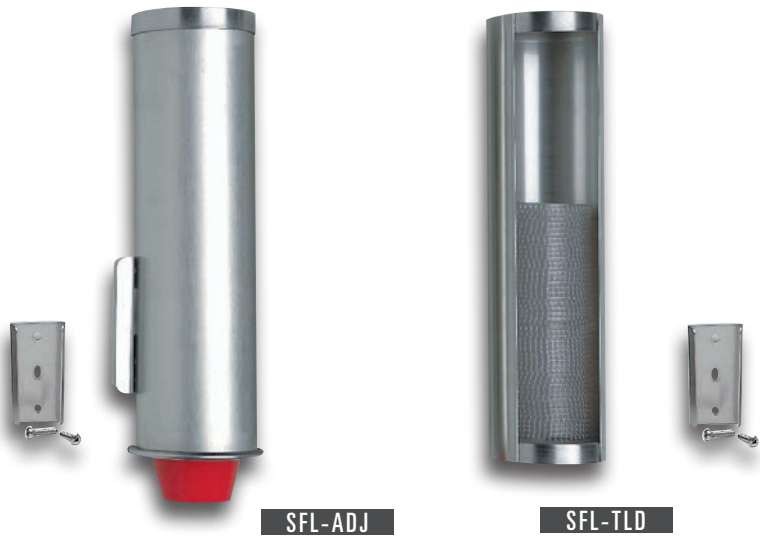
The SFL-ADJ portion cup dispenser is top loading and self-adjusting. It is ideal for use with portion cups for condiments or dressings.

The SFL-TLD lid dispenser is front loading and requires no adjustment. This lid dispenser is an ideal complement to customers using the SFL-ADJ that require storage for portion cup lids.

Quality stainless steel construction ensures years of dispensing reliability.

All units can be mounted to a wall or any type of vertical surface. Each dispenser includes a stainless steel mounting bracket.

Countertop stands are also available. Please see below for additional information on SFL Series countertop dispensing stands.



Model Number	Cup / Lid Rim Diameter	Tube Diameter	Tube Length	Paper/Plastic Sizes	Foam Sizes
SURFACE OR STAND PORTION CUP & LID DISPENSERS					
SFL-ADJ	2 $\frac{3}{8}$ "-2 $\frac{7}{8}$ "	3 $\frac{3}{8}$ "	12"	2 oz. to 6 oz.	2 oz. to 6 oz.
SFL-TLD	2"-3"	3 $\frac{1}{8}$ "	12"	2 oz. to 6 oz.	2 oz. to 6 oz.

BLACK POLYSTYRENE CONSTRUCTION

▽ COUNTERTOP STANDS FOR PORTION CUP & LID DISPENSERS



SFL-STAND-2 shown with SFL-ADJ and SFL-TLD portion cup & lid dispensers.



SFL-STAND-1



SFL-STAND-2

SFL SERIES COUNTERTOP PORTION CUP & LID DISPENSER STANDS

Countertop stands feature durable polystyrene construction. Their compact footprint provides a stable dispensing platform for the SFL-ADJ and SFL-TLD portion cup and lid dispensers. Stands are available to hold one or two dispensers.

Model Number	Number of Dispenser Attachments	Dimensions H x W x D
SFL-STAND-1	1	15" x 5" x 11 $\frac{1}{4}$ "
SFL-STAND-2	2	15" x 7 $\frac{1}{2}$ " x 11 $\frac{1}{4}$ "